



HAMMER

STORAGE

POCKET HAMMER INSTALLATION GUIDE

FOR WINDOWS-BASED SYSTEMS

CONTENTS

POCKET HAMMER OVERVIEW	2
REQUIREMENTS	3
INSTALLING THE DRIVE	3
INSTALLING THE SOFTWARE	4
PERFORMING A SETUP	5
BACKUP OPERATION	9
RESTORE OPERATION	9
CHANGING THE ONESTEP BACKUP BUTTON SETTINGS	10
NOTICE	11
LIMITED WARRANTY	12
CONTACTING SUPPORT	13

POCKET HAMMER OVERVIEW

Pocket Hammer is the 2.5 inch external hard drive with OneStep Portable Backup. It protects critical data with the push of a button.

Pocket Hammer™ gives the performance needed to run large, persuasive, multimedia presentations, enough space for all critical files, and a complete, portable backup solution to protect unguarded data. Users can create and enjoy digital audio and video wherever inspiration strikes, or simply listen to their digital music collections anywhere they go. If the laptop is being used as a studio, Pocket Hammer is portfolio and library all in one. Is more storage space needed for an ever-expanding collection of digital photographs? Pocket Hammer creates a digital archive complete with back-up protection or a direct download of images from a camera to free up space for new pictures.



REQUIREMENTS

In order to run and use Pocket Hammer and Instaback Retrospect Express, certain minimum requirements of hardware, software, and memory must be met.

HARDWARE

- Intel or compatible processor (Pentium 120 or better)
- 128 MB RAM or better
- Hard disk with 50 MB free space
- Laptop or Desktop system with two USB ports

SOFTWARE

- Instaback Retrospect Express requires Windows 98, NT4.0, 2000 Professional, or XP

3

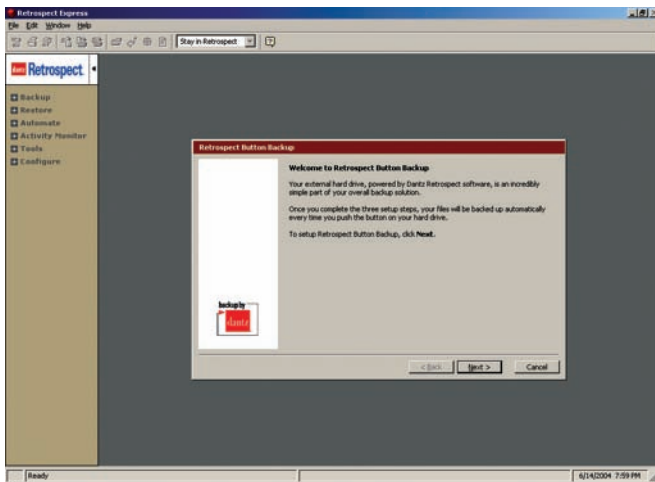
INSTALLING THE DRIVE

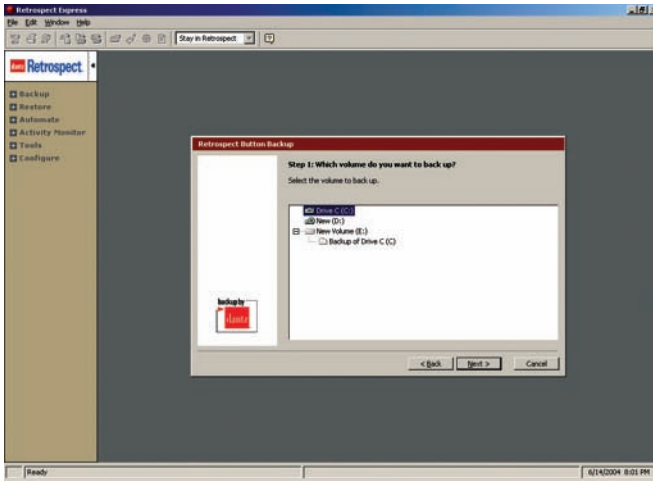
Plug both USB cables into the Pocket Hammer and your computer

Wait a few seconds until the system recognizes the new USB device

INSTALLING THE SOFTWARE

1. Insert CD labeled Instaback, Retrospect Express into your CD-Rom drive
2. Run the Retrospect installer
3. After the installation (or restart, if necessary) is complete, push the button on your external hard drive to launch Retrospect Express.
4. Retrospect Express opens and immediately prompts you for the license code. Your version is pre-licensed, just click **OK**.
5. Product registration
6. After you have completed the registration process, the Retrospect Button Backup wizard starts by displaying a welcome screen. Click **Next** to begin the setup process.



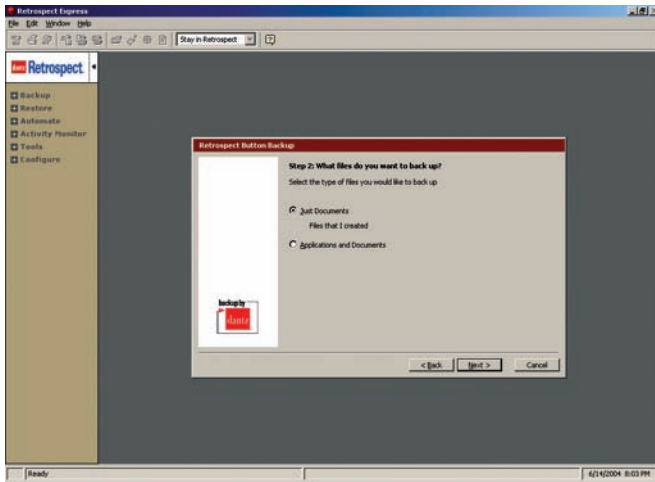


PERFORMING A SETUP

5

STEP 1. WHICH VOLUME DO YOU WANT TO BACK UP?

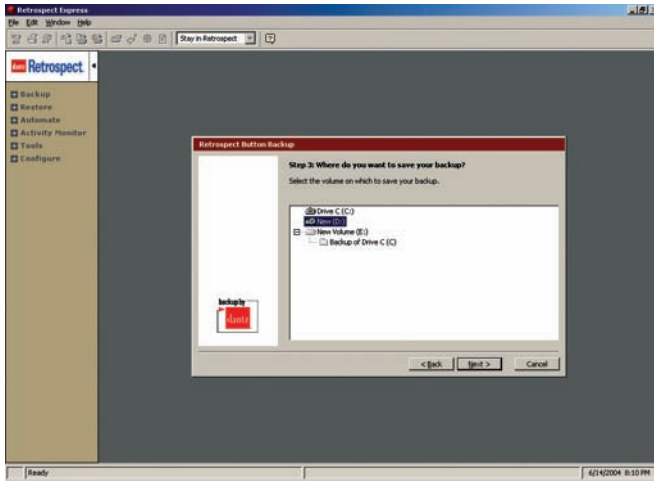
Select the volume that Retrospect Express will back up every time you push the button on your external hard drive.



STEP 2. WHAT FILES DO YOU WANT TO BACK UP?

Select the type of files you would like to back up.

- By default, Retrospect Express selects the “Documents Only” option, which backs up the My Documents folder, text files, music, movies, pictures, favorites, and cookies. This is an ideal choice for most users.
- The “Entire Volume” choice copies the entire volume (including application files) to a folder on your external hard drive, allowing you to replace any application file that becomes corrupt. After you select the files for backup, click **Next**.

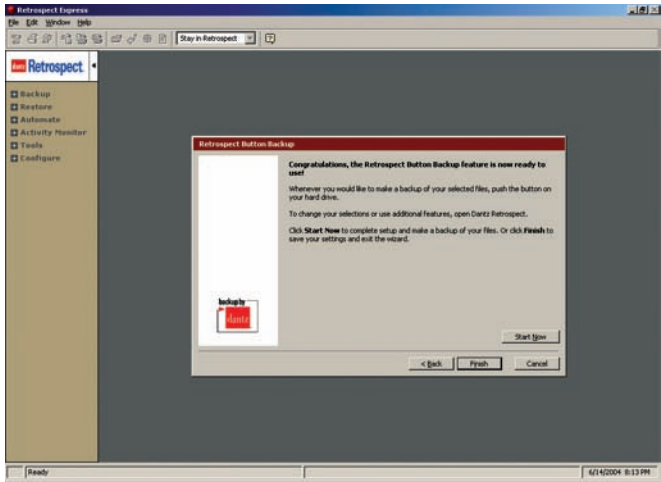


STEP 3. WHERE DO YOU WANT TO SAVE YOUR BACKUP?

Select the volume on your external hard drive where you want to store your back up data.

17

NOTE: This volume cannot be the same volume selected in Step 1. The backup source and destination must be different volumes.



STEP 4. COMPLETE THE SETUP.

You are now ready to exit the Retrospect Button Backup wizard and begin your first backup. To complete the setup and begin your first backup, select **Start Now**. To complete the setup and perform your first backup later, select **Finish** and exit Retrospect.

BACKUP OPERATION

The first backup is a full backup that copies all the files and folders selected for backup.

After the first backup, just press the backup button on your Pocket Hammer and Retrospect Express will automatically back up only the new and changed files.

RESTORE OPERATION

In Windows Explorer, locate the hard disk that contains your backup.

Open the disk and open the Retrospect Backup folder, which contains a folder named “Backup of <Your Hard Drive Name>.”

9

You can now select any file or look through subfolders to find the files or folders that you want to restore.

Simply drag the files to the location where you want to restore them. If you are unsure of the location of the files and folders you want to restore, use Windows’ Search function to search the backup drive for the files you want to restore.

CHANGING THE ONESTEP BUTTON BACKUP SETTINGS

The software has other features you might want to use in addition to the OneStep Button Backup functionality. To learn more about the advanced features of Retrospect Express, refer to the extensive Retrospect Express help for more details.

If you want to change your Retrospect Button Backup settings, launch Retrospect Express.

Go to **Automate** in the navigation bar and click **Manage Scripts**.

- If you delete the “Retrospect Button Backup” script in **Manage Scripts** and then push the button on your external hard drive, the Retrospect Button Backup wizard will launch again and you can change your settings.
- If you want to use advanced features to create your own scripts, you can enable the OneStep Button Backup functionality by selecting any Retrospect Express script in **Manage Scripts** and renaming it “Retrospect Button Backup.” Retrospect Express will execute the “Retrospect Button Backup” script whenever you push the backup button on the external hard drive.

NOTE: You can only have one script named Retrospect Button Backup. You must first delete or rename an existing Retrospect Button Backup script prior to creating a new one.

NOTICE

Although reasonable efforts have been made to assure the accuracy of the information contained herein, this publication could include technical inaccuracies or typographical errors. Hammer Storage Products and Instaback expressly disclaims liability for any error in this information, and for damages, whether direct, indirect, special, exemplary, consequential or otherwise, that may result from such error, including but not limited to loss of profits resulting from the use or misuse of the manual or information contained therein (even if Hammer Storage Products has been advised of the possibility of such damages). Any questions or comments regarding this document or its contents should be address to Hammer Storage Products at the address shown in the back of this manual.

The following paragraph does not apply to the United Kingdom or any country where such provisions are inconsistent with local law:

HAMMER STORAGE PRODUCTS PROVIDES THIS PUBLICATION “AS IS” WITHOUT WARRANTY OF ANY KIND, EITHER EXPRESS OR IMPLIED, INCLUDING, BUT NOT LIMITED TO, THE IMPLIED WARRANTIES OF MERCHANTABILITY OR FITNESS FOR A PARTICULAR APPLICATION.

Some states do not allow disclaimer of express or implied warranties or the limitation or exclusion of liability for indirect, special, exemplary, incidental, or consequential damages in certain transactions; therefore, this statement may not apply to you. Also, you may have other rights which vary from jurisdiction to jurisdiction.

Information in this publication is subject to change without notice and does not represent a commitment on the part of Hammer Storage Products. Changes may be made periodically to the information herein; these changes will be incorporated in new editions of the publication. Hammer Storage Products reserves the right to make improvements and/or changes at any time in the product and programs described in this publication.

It is possible that this publication may contain reference to, or information about, Hammer Storage Products products (machines or programs), programming or services that are not announced in your country. Such references or information must not be construed to mean that Hammer Storage Products intends to announce, provide, or make available such Hammer products, programming, or service in your jurisdiction.

LIMITED WARRANTY

The sale of equipment here under is made upon the following terms and conditions. Any additional or different terms and conditions proposed by Customer or set forth in Customer's purchase order or similar communication will not be binding upon Hammer Storage Products (Hereinafter "Hammer"), unless specifically asserted to in writing by Hammer's authorized representative.

Hammer Storage Products will repair this product with new or rebuilt parts, free of charge, in the U.S.A. for one (1) year from the date of shipment in the event of a defect in materials or workmanship. If the equipment is found to be defective within this period, Customer shall notify Hammer and request authorization for return of the defective equipment. Upon receipt of the defective equipment, Hammer shall, at its option either repair the equipment, supply a replacement (subject to availability), make a price adjustment or credit Customer's account upon an approved return of the equipment.

This warranty only covers failures due to defects in materials or workmanship which occur during normal use. It does not cover damage which occurs in shipment or failures which are caused by products not supplied by Hammer or failures which result from accident, misuse, abuse, neglect, mishandling, misapplication, alteration, faulty installation, modification, or service by anyone other than Hammer or an authorized Hammer Service Provider or damage that is attributable to acts of God.



LIMITS AND EXCLUSIONS

The foregoing is the sole and exclusive warranty and remedy regarding equipment purchased by Customer and is in lieu of all other warranties and remedies, whether written, oral, implied or statutory. All warranties of merchantability or fitness for any particular purpose are specifically excluded and disclaimed. Hammer will not be liable for any loss or damage whatever by reason of its failure to discover, report, repair or modify latent defects or defects inherent in the design of the equipment.

HAMMER SHALL NOT BE LIABLE FOR INCIDENTAL OR CONSEQUENTIAL DAMAGES RESULTING FROM THE USE OF THIS PRODUCT, OR ARISING OUT OF ANY BREACH OF THIS WARRANTY.

Some states do not allow the exclusion or limitation of incidental or consequential damages, or limitations on how long an implied warranty lasts, so the above exclusions or limitations may not apply to you. This warranty gives you specific legal rights, and you may also have other rights which vary from state to state.

CONTACTING SUPPORT

For technical support, please contact the Value Added Reseller from whom you bought the product, or contact us at:

support@hammer-storage.com

<http://www.hammer-storage.com>

SERIAL NUMBER: _____

DATE OF PURCHASE: _____



Pocket Hammer Installation Guide 1.0

Copyright © 2004

Instaback

Version 1.0.PHW61404