

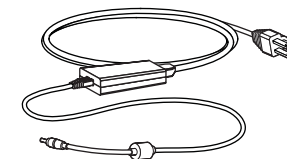
**HAMMER**  
STORAGE

**myshare**<sup>™</sup>  
Storage Appliance (for Microsoft Windows)

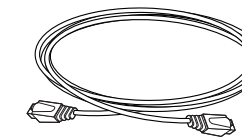
## Verify Contents

Verify that your **myshare** came with all of the following items:

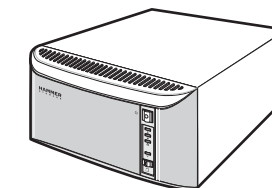
- Region-specific power cord



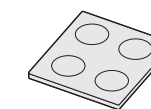
- Ethernet cable



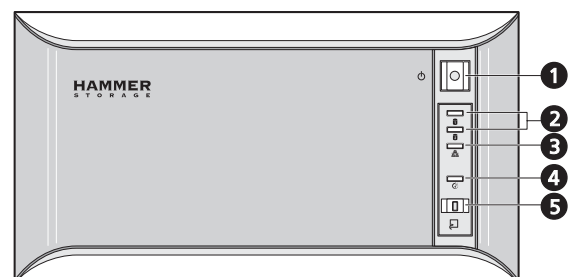
- **myshare** Unit



- Rubber feet

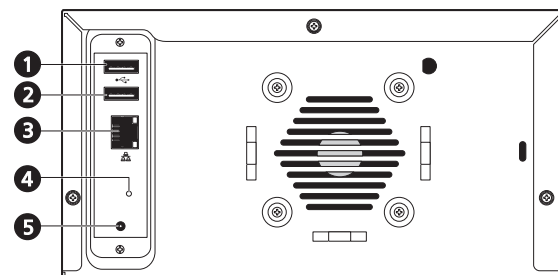


## System Tour



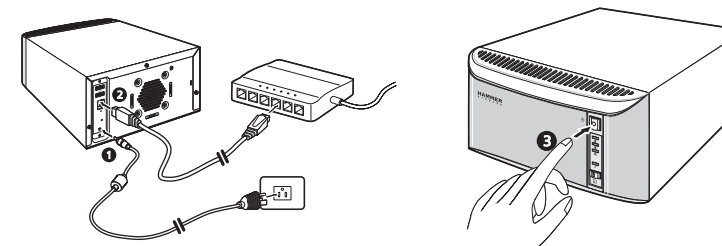
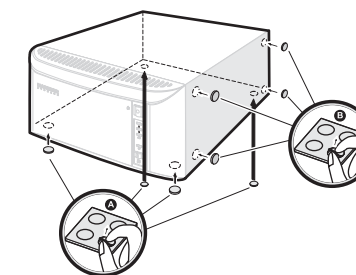
1. Power button
2. Hard drive activity indicator
3. LAN link or activity indicator
4. System identification indicator
5. USB backup button

1. USB port 2
2. USB port 1 (Auto-Backup Port)
3. Gigabit LAN port
4. Reset button
5. AC jack



## Hardware Setup

1. Before placing **myshare** on a flat secure surface, install the rubber feet.  
Peel off one of the rubber feet from the adhesive strip and place it adhesive-side down onto one of the four round recessed areas on the bottom panel (A) or right panel (B) of the chassis.  
Repeat this step to install the remaining four feet.
2. Connect the power adapter to the AC jack on the rear of **myshare**, then connect the power adapter to a power outlet (1).
3. Connect the Ethernet cable into the Gigabit Ethernet port on the rear of the **myshare**, then connect the other end of the cable to a router or switch (2).
4. Press power button and hold for three seconds (3).
5. Verify LEDs are on and correct. Power Button and both Hard Drive LEDs should be green. Network LED should be green and may flash.



## System Configuration Utility Setup for Microsoft Windows

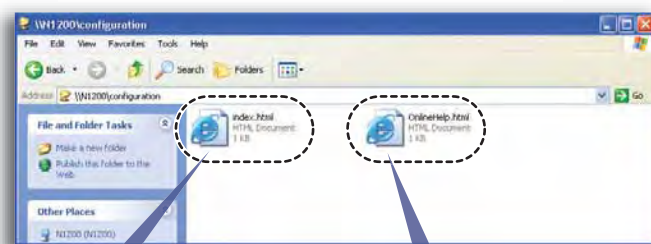
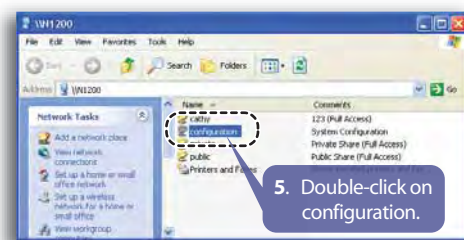
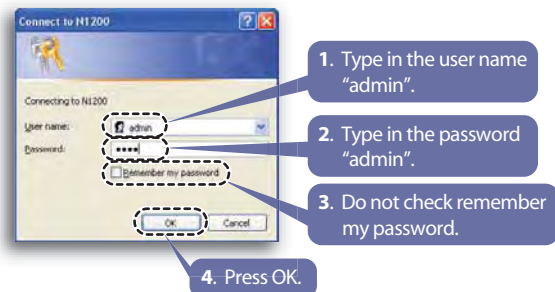
### 1 Find myshare Device

**NOTE:** Installation of a second myshare will require the Machine Name of the first myshare to be changed.

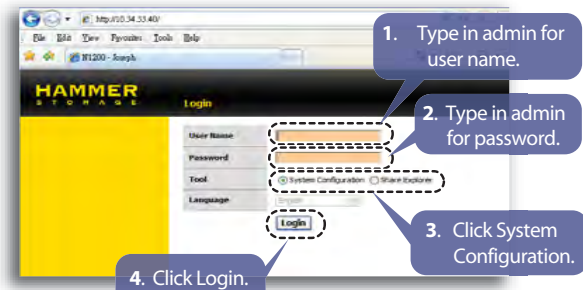


The process should take 5 to 10 minutes to complete depending on your computer's Windows settings

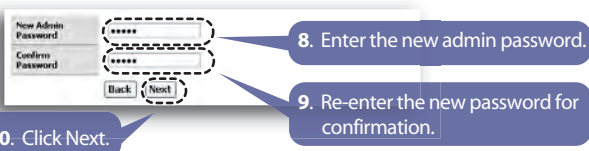
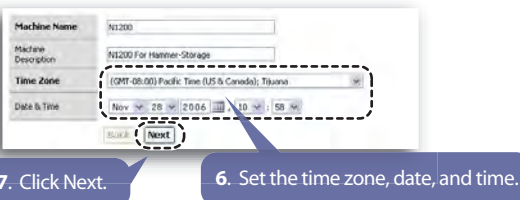
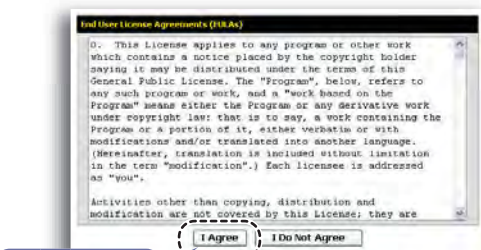
### 2 Login to myshare Setup



### 3 Configure myshare



**NOTE:** The default user name is **admin** and the default password is **admin**.



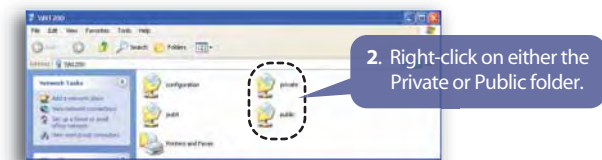
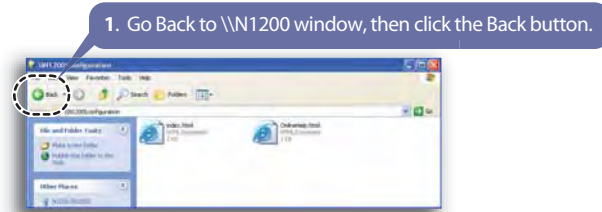
**NOTE:** Both user name and password are case sensitive and should be entered exactly in the same way each time.



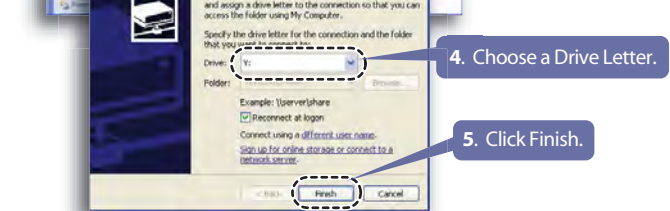
**NOTE:** Selecting Static IP requires you to manually assign the IP information for the myshare storage appliance. Not recommended for basic users.



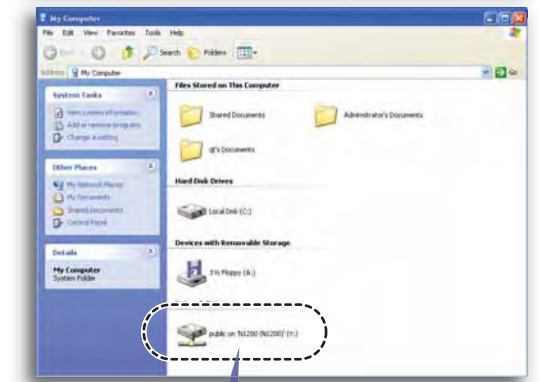
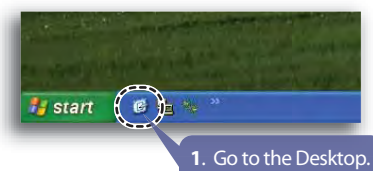
### 4 Map Folder as Network Drive



**NOTE:** Private is password protected and Public is for sharing with multiple computers.



### 5 Verify Network Drive Setup



4. Congratulations!!! Your Network Drive is Setup!

For MAC users, please download the Quick Start Guide from [www.Hammer-Storage.com](http://www.Hammer-Storage.com)

Need More Help?  
Contact Tech Support  
Email - [support@hammer-storage.com](mailto:support@hammer-storage.com)  
Phone - 1-800-237-0840

For a One Year Warranty, please register your product at [www.Hammer-Storage.com](http://www.Hammer-Storage.com)