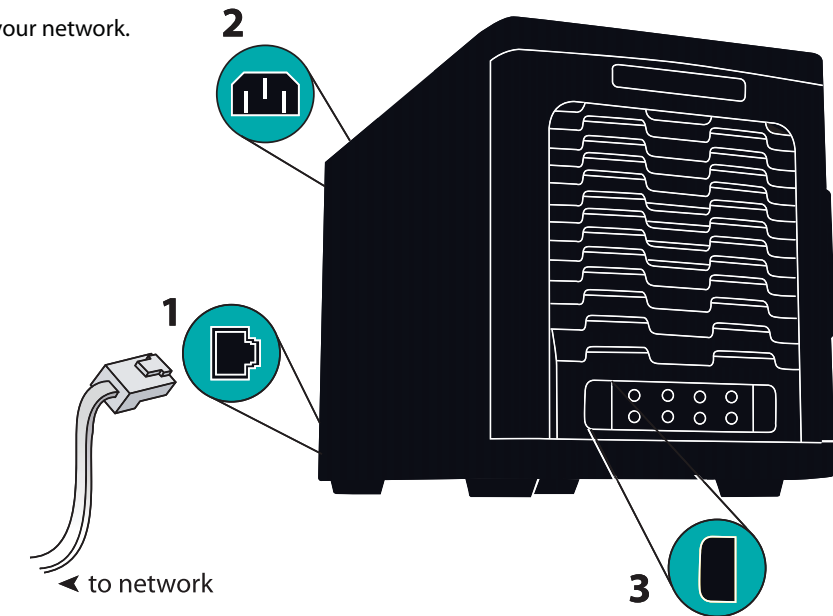


HAMMER
STORAGE

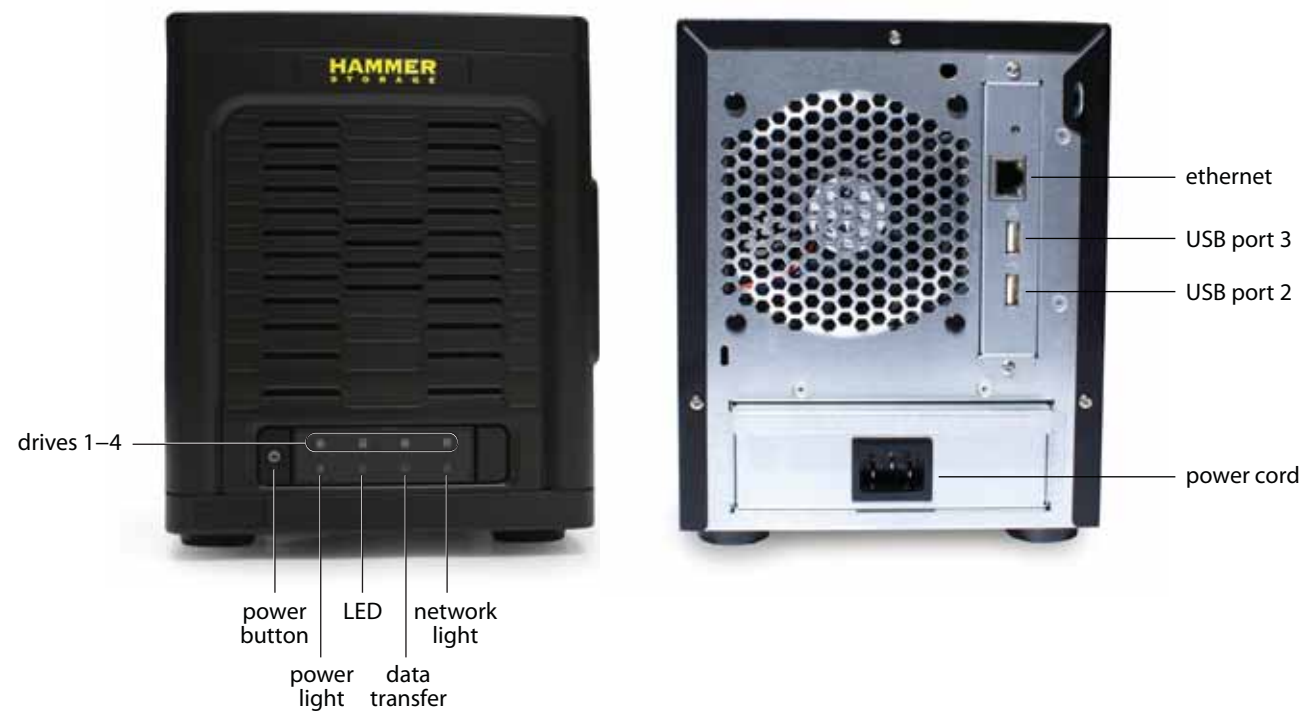
myshare[™]
Office Network Storage

Hardware Setup

1. Connect myshare storage enclosure to your local area network (LAN).
2. Connect myshare enclosure to a power outlet.
3. Power it on.
4. Connect one or more PCs to your network.



About Your External Drive



Software Default Settings

Machine Name N1400
Workgroup Name WORKGROUP
IP Mode DHCP
RAID Level Stripe (0)

Default Folders:

download
media_library
public
private

Default Users / Passwords:

admin / admin
guest / (blank)

Network Default Services:

HTTP Port 80
HTTPS Port 443
FTP Port 21



System Configuration Utility Setup

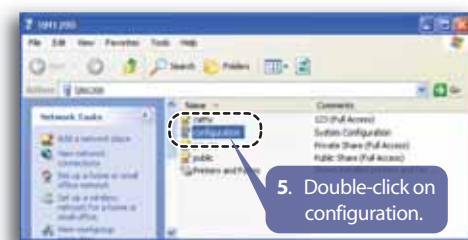
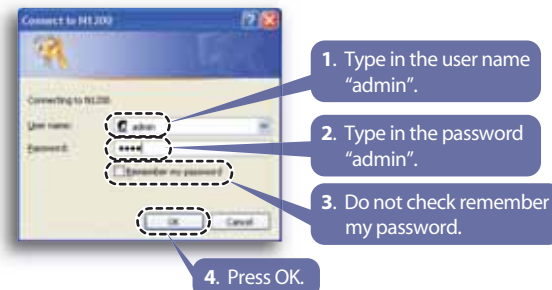
1 Find myshare Device

NOTE: Installation of a second myshare will require the Machine Name of the first myshare to be changed.

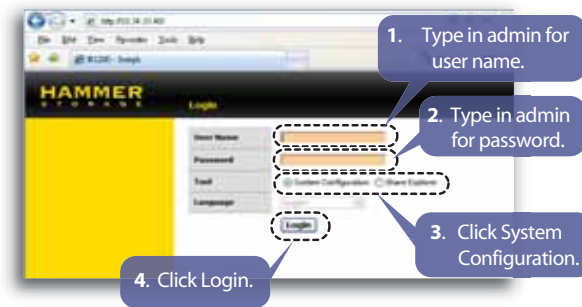


The process should take 5 to 10 minutes to complete depending on your computer's Windows settings

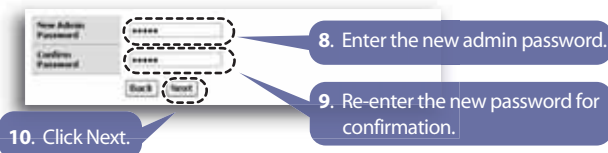
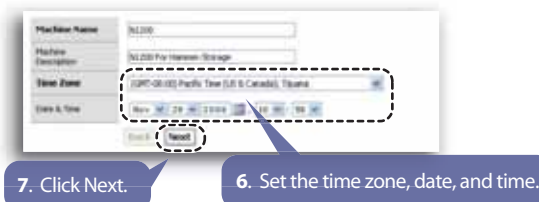
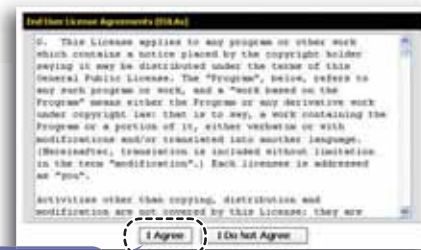
2 Login to myshare Setup



3 Configure myshare



NOTE: The default user name is **admin** and the default password is **admin**.



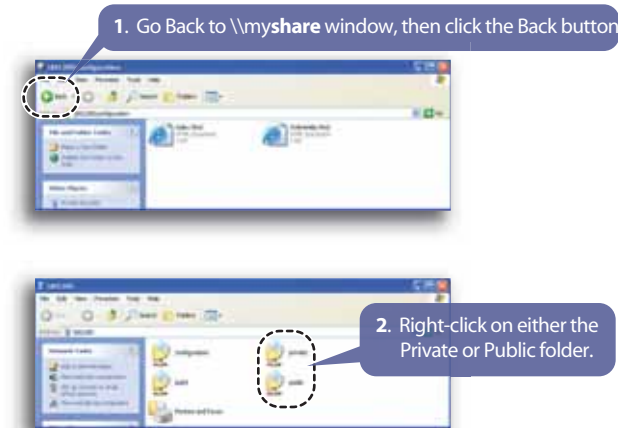
NOTE: Both user name and password are case sensitive and should be entered exactly in the same way each time.



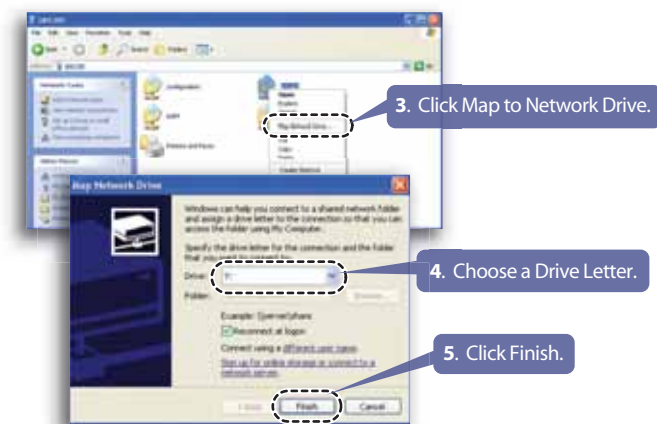
NOTE: Selecting Static IP requires you to manually assign the IP information for the myshare storage appliance. Not recommended for basic users.



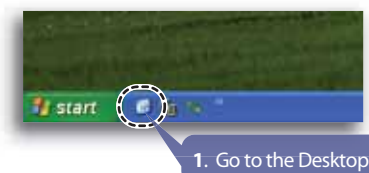
4 Map Folder as Network Drive



NOTE: Private is password protected and Public is for sharing with multiple computers.



5 Verify Network Drive Setup



4. Congratulations!!! Your Network Drive is Setup!

For MAC users, please download the Quick Start Guide from www.Hammer-Storage.com

Need More Help?
Contact Tech Support
Email - support@hammer-storage.com
Phone - 1-800-237-0840

For a One Year Warranty, please register your product at www.Hammer-Storage.com