

Printing via MAC on N1200(MyShare)

2007/04/17

Step 1.

Power on myshare and plug USB printer into USB port

Step2.

Use MAC computer to connect to myshare according to page 2 of MAC QSG and go to “Printer Management” page.

We found printer EPSON Stylus CX3100 was detected by myshare.



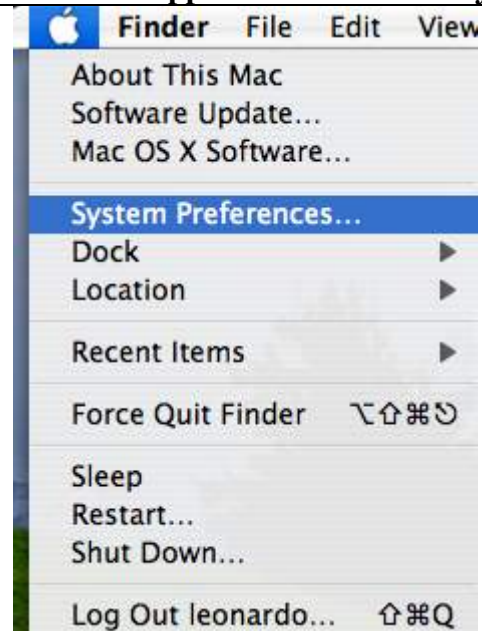
Model	State
EPSON_Stylus_CX3100	idle

Active Job ID	User	Size	State
---------------	------	------	-------

Note:

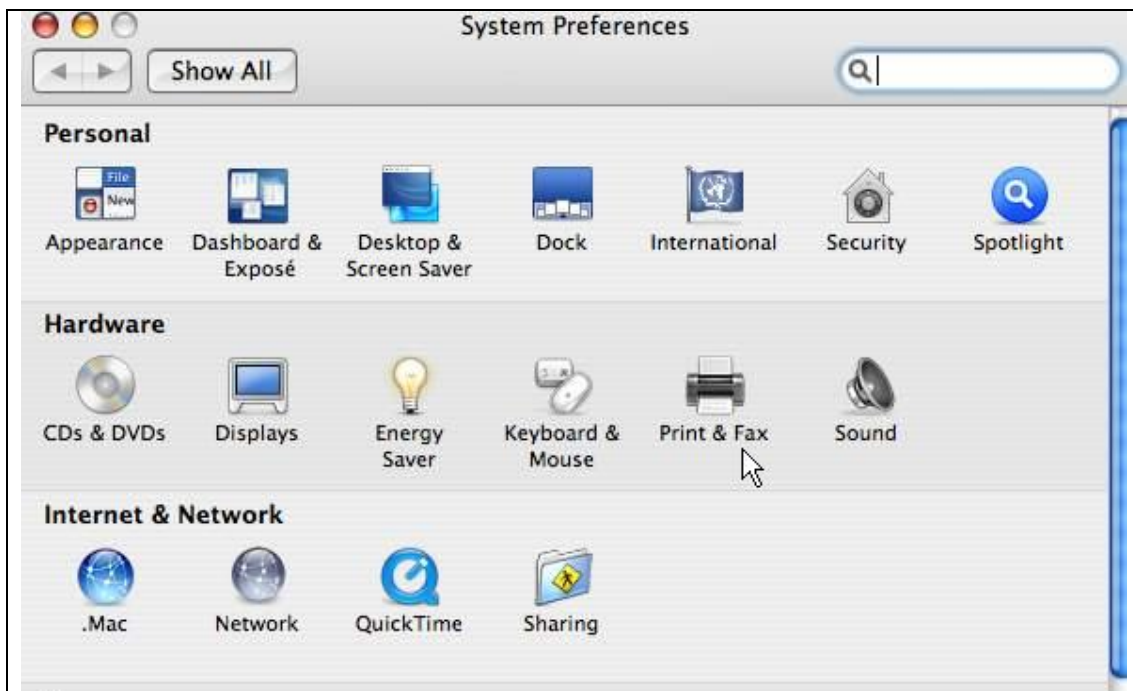
Step3.

Click the Apple icon and select “System Preference”

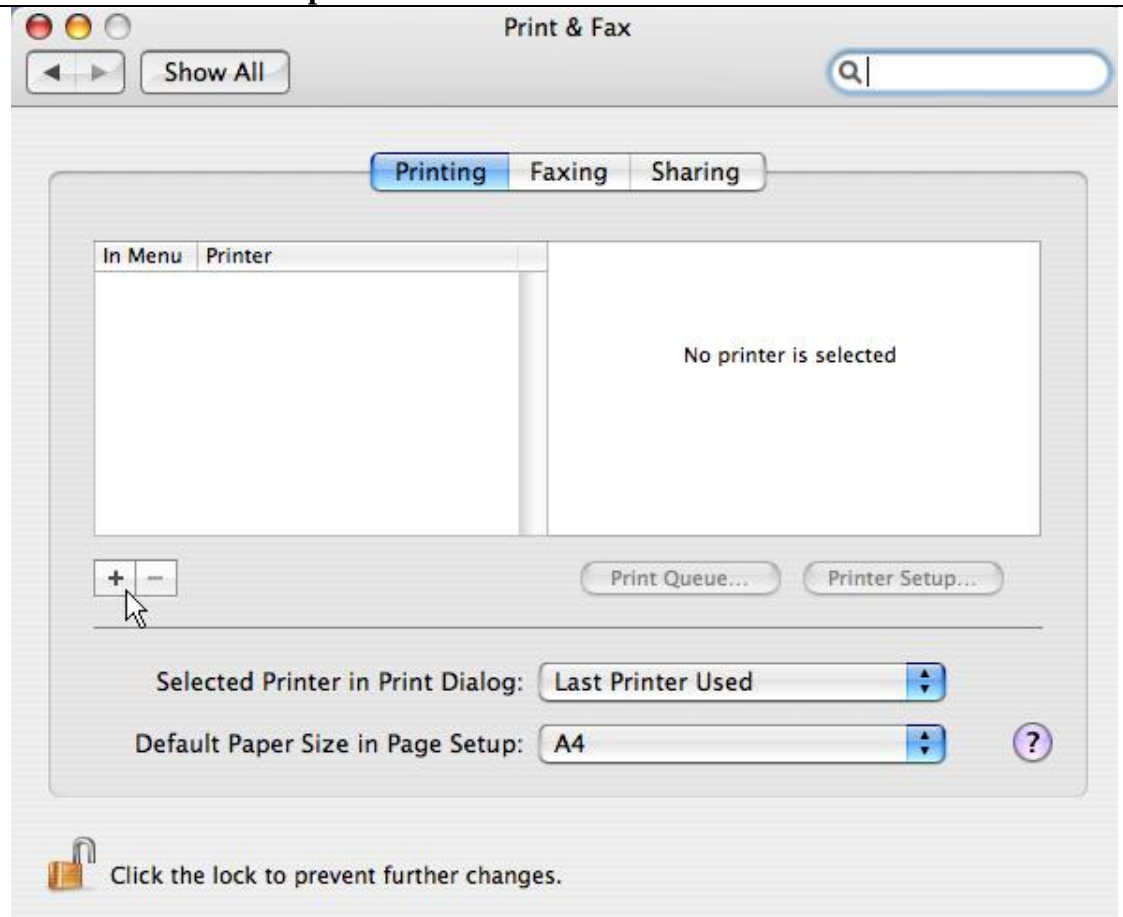


Step4.

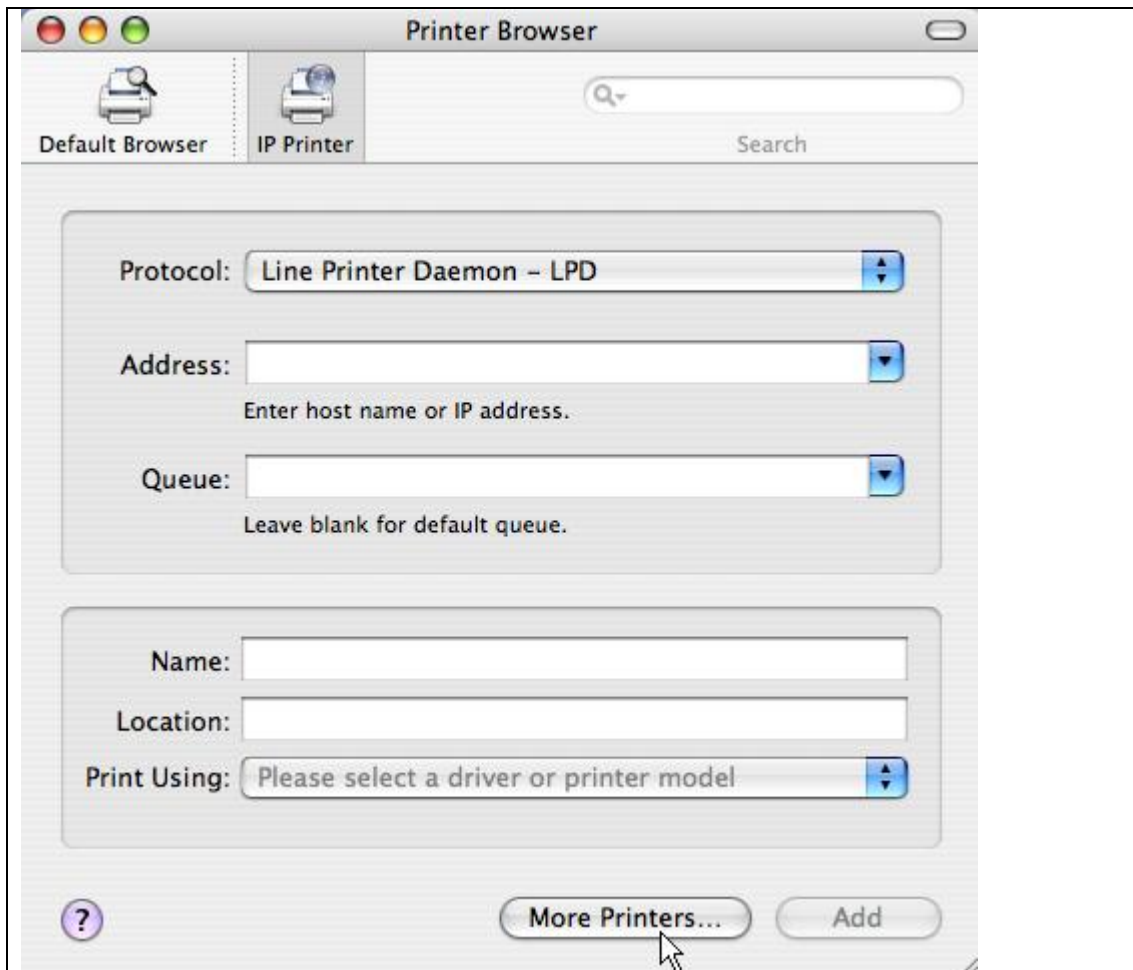
Click “Print & Fax” to setup printer



Step5.
Click “+” to add new printer



Step6.
Hold down the Alt/Option key on your keyboard and click “More Printers” in the Printer Browser window



Step7.

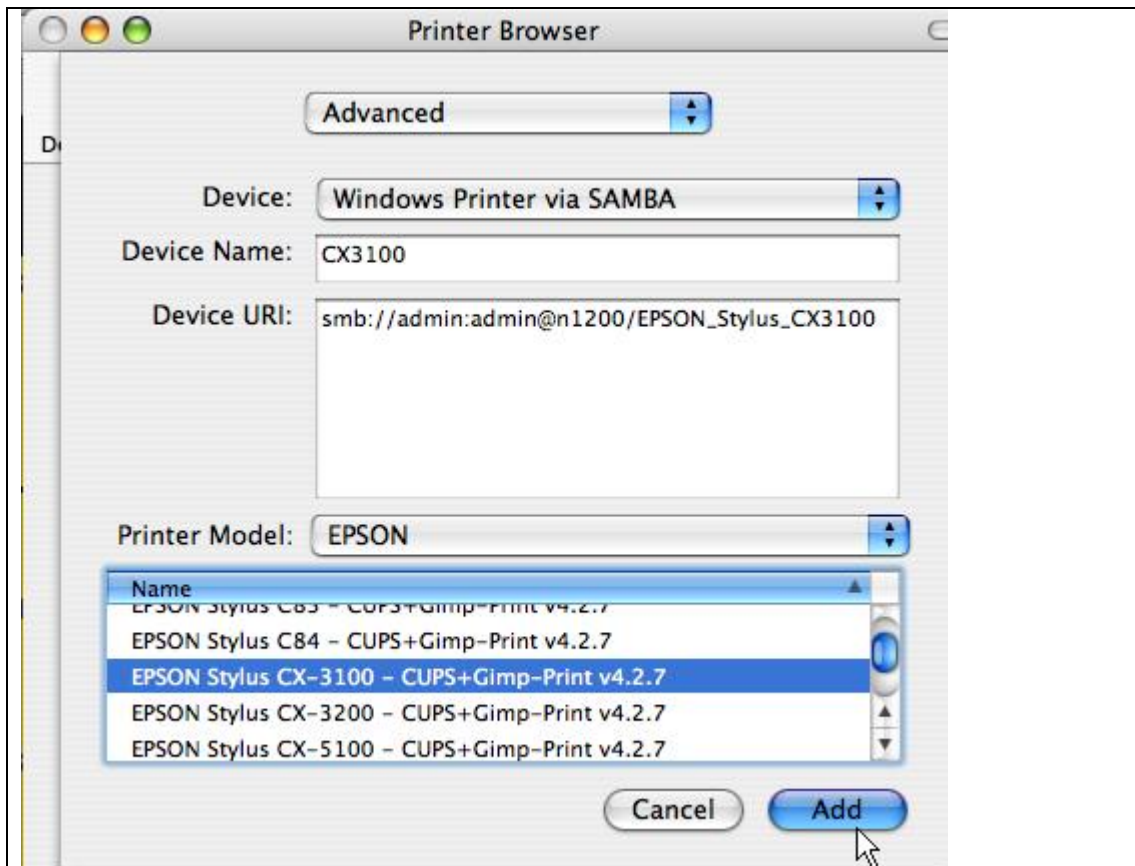
In the top pull-down menu, choose “Advanced”.

In the Device pull-down menu, choose “Windows Printer via SAMBA”.

In Device Name, give the printer the name “CX3100”

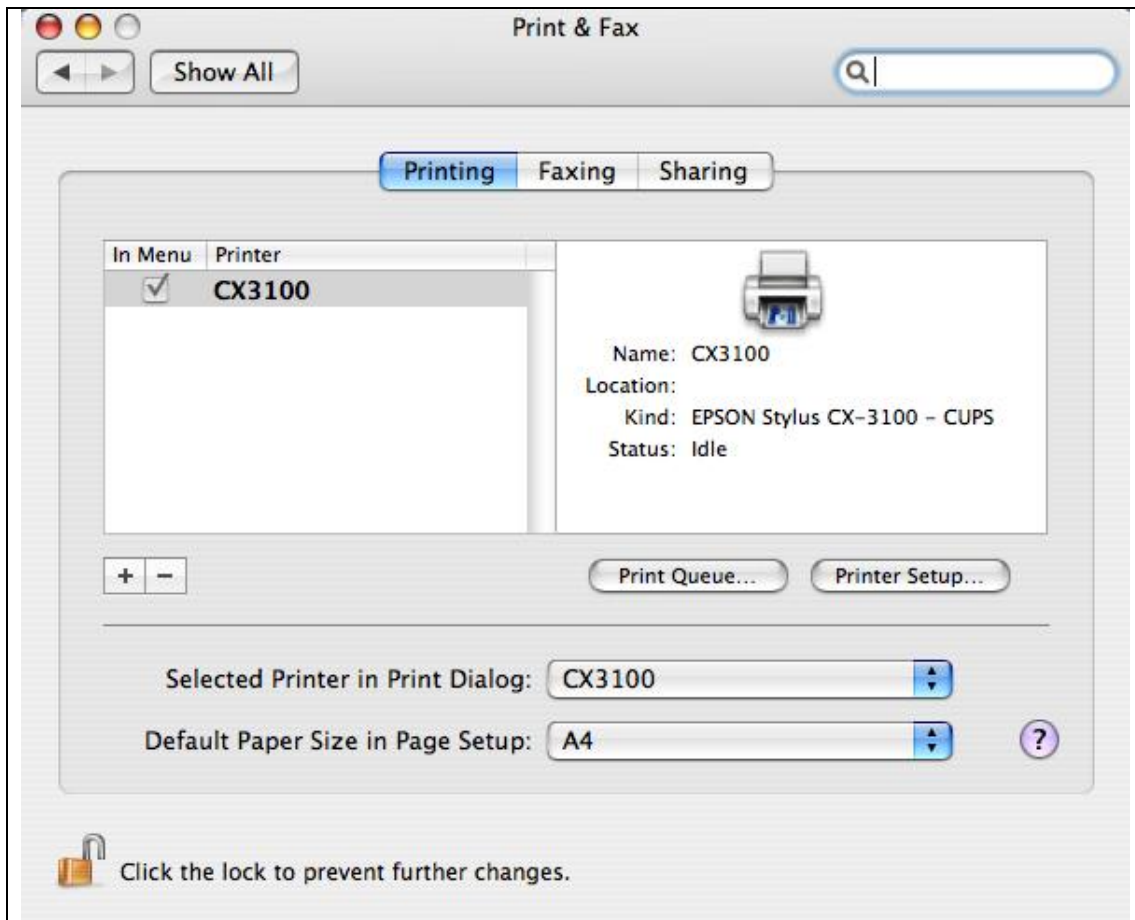
In Device URI, type: smb://admin:admin@n1200/EPSON_Stylus_CX3100

In the Model pull-down menu, choose the driver for that printer. Click “Add” button.



Step8.

The printer setup process was completed and we can find the printer CX3100 in the printer list.



Step9.

Print one page to test printing function.

During the job is printing, active job status will be shown on the “Printer Management” Page.

Then the printer printed the test page.

