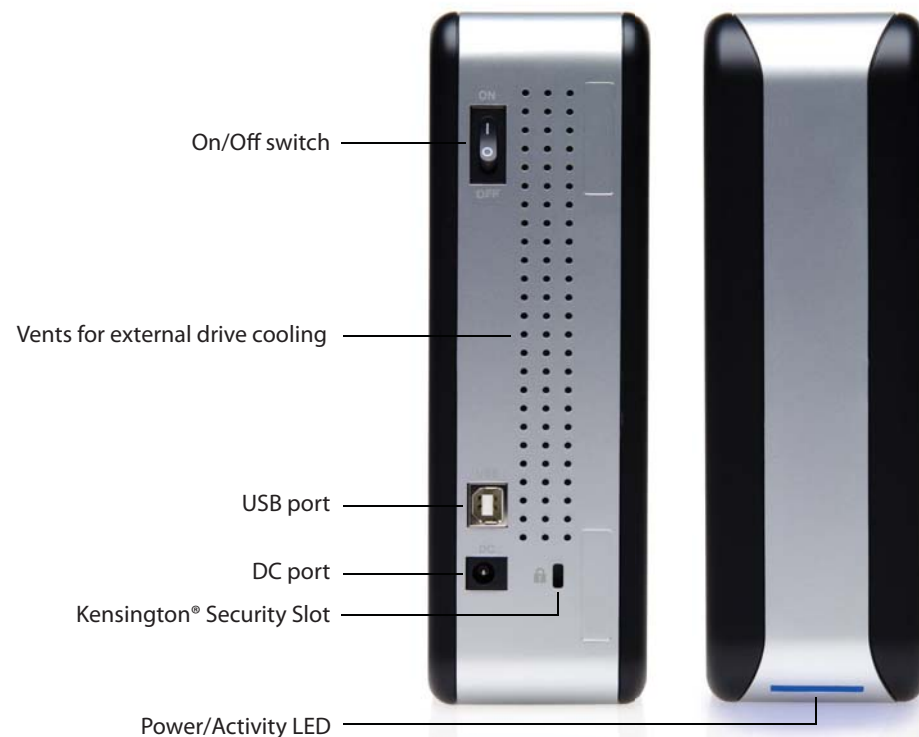


**HAMMER**  
STORAGE

**morespace**<sup>TM</sup>  
External Hard Drive

## About Your External Drive



Verify that your kit came with all of the following items:

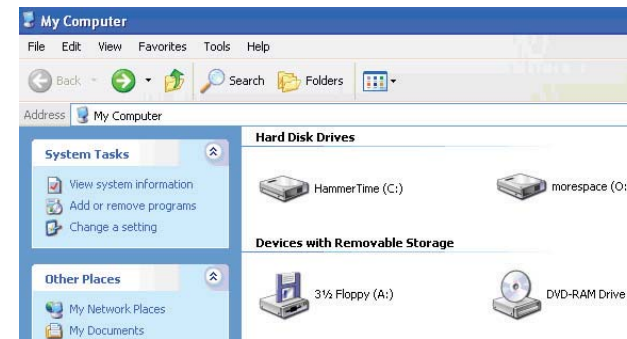
- AC power adapter
- USB cable
- morespace unit
- rubber feet

## Windows XP Instructions

- 1 Plug in the morespace power cord into a power source. Then connect the morespace USB cable into the PC.
- 2 Turn on morespace. Within a minute, the icon (boxed in red) should appear in the lower right corner of the taskbar.




- 3 Open "My Computer" from the desktop or Start menu and morespace will be listed. Drive letter may vary.



- 4 morespace is now available to save your digital information.

### SAFE REMOVAL/DISCONNECTING INSTRUCTIONS:

- 1 Close out all windows and applications accessing morespace.
  - 2 Left click on the Safely Remove Hardware icon in the lower right corner of the taskbar.
- 
- 3 Click on the correct drive (if multiple USB storage devices are plugged in more than one may appear).
  - 4 Now you can safely disconnect the drive.

**Important:** For highest performance and reliability, it is recommended that the latest updates and services pack is installed. For Windows XP, go to the Start Menu and select Windows Update.

All data stored on the Hammer morespace hard drive should have a duplicate copy on a CD, DVD, backup hard drive or other storage type.

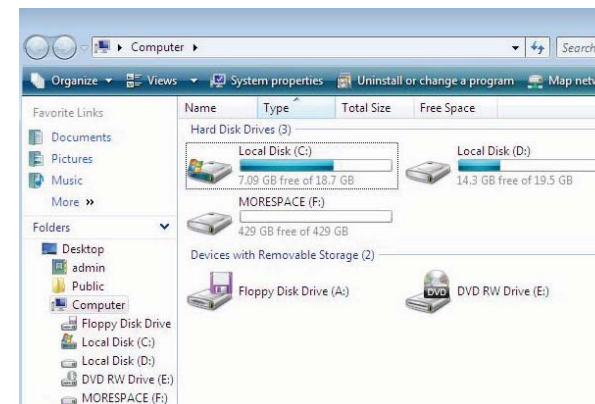
In addition, the morespace hard drive is formatted as FAT 32 to be accessed by both Macs and PCs. To achieve highest performance with Windows XP, it is recommended that you reformat to NTFS.

## Windows Vista Instructions

- 1 Plug in the morespace power cord into a power source. Then connect the morespace USB cable into the PC.
- 2 Turn on morespace. Within a minute, the icon (boxed in red) should appear in the lower right corner of the taskbar.




- 3 Open "Computer" from the desktop or Start menu and morespace will be listed. Drive letter may vary.



- 4 morespace is now available to save your digital information.

### SAFE REMOVAL/DISCONNECTING INSTRUCTIONS:

- 1 Close out all windows and applications accessing morespace.
  - 2 Left click on the Safely Remove Hardware icon in the lower right corner of the taskbar.
- 
- 3 Click on the correct drive (if multiple USB storage devices are plugged in more than one may appear).
  - 4 Now you can safely disconnect the drive.

**Important:** For highest performance and reliability, it is recommended that the latest updates and services pack is installed. For Windows Vista, go to the Start Menu and go to All Programs and select Windows Update.

All data stored on the Hammer morespace hard drive should have a duplicate copy on a CD, DVD, backup hard drive or other storage type.

In addition, the morespace hard drive is formatted as FAT 32 to be accessed by both Macs and PCs. To achieve highest performance with Windows Vista, it is recommended that you reformat to NTFS.

## Mac OS X Instructions

1 Plug in the **morespace** power cord into a power source. Then connect the **morespace** USB cable into the computer.

2 Turn on **morespace**. After a few seconds the USB icon will appear on the desktop.



3 **morespace** is now available to save your digital information.

### SAFE REMOVAL/DISCONNECTING INSTRUCTIONS:

- 1 Close out all windows and applications accessing **morespace**.
- 2 Drag the USB drive icon on the desktop to the trash.
- 3 Now you can safely disconnect the drive.

**Important:** For highest performance and reliability, it is recommended that the latest updates and services pack is installed. For Mac OS X, go to the Apple menu and select Software Update.

All data stored on the Hammer **morespace** hard drive should have a duplicate copy on a CD, DVD, backup hard drive or other storage type.

In addition, the **morespace** hard drive is formatted as FAT 32 to be accessed by both Macs and PCs. To achieve highest performance with Mac OS X, it is recommended that you reformat to HFS.

## Product Resources & Support

### Having Trouble?

*What is the difference between NTFS and FAT32?*

*What is the difference between HFS and FAT32?*

*What is the difference between USB 1.1 and USB 2.0?*

*Why is the capacity on the box different from the capacity on the computer?*

*What is the difference between archiving and backing up?*

**Answers to FAQ's available at**  
[www.hammer-storage.com/support/faq.asp](http://www.hammer-storage.com/support/faq.asp)

Please download the full guide from  
[www.Hammer-Storage.com](http://www.Hammer-Storage.com)

### Need More Help?

Contact Tech Support  
Email - [support@hammer-storage.com](mailto:support@hammer-storage.com)

Phone - **1.800.237.0840**

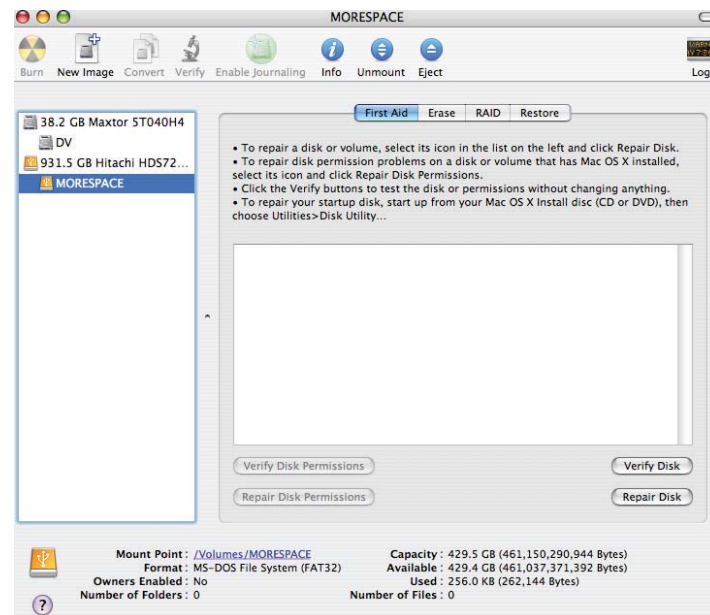
For a One Year Warranty,  
please register your product at

[www.Hammer-Storage.com](http://www.Hammer-Storage.com)

## Mac OS Formatting

If the drive doesn't show on the desktop, then open disk utility. Open HD → Applications → Utilities → Disk Utility.

You should see something similar to this:

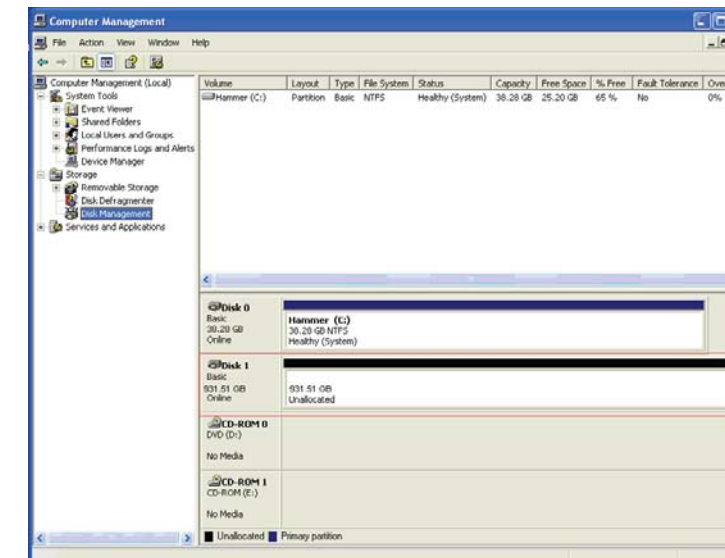


Select the USB drive on the left part and then erase. Select the volume format you want to use (note to use the drive fully on both a Microsoft PC and a Mac the format needs to be MS-DOS File System). Next, type in the name for the volume/drive. Then click on erase button on the bottom right. This will make the drive usable on your Mac.

## Windows Formatting

If the drive doesn't show in "My Computer", then go to Start → Settings → Control Panel → Administrative Tools → Computer Management. Now select Disk Management under Storage from the menu on the right.

You should see something like this:



On the bottom of the right side of the Computer Management window, find the disk with a capacity that closely matches your Hammer **morespace** (i.e. Disk1).

**Change drive letter:** Letter may be already used by a network drive. Right click on the box that includes the drive letter and select Change Drive Letter and Paths. Now click on "change" or "add" (if no letter is listed), select a letter that is not being used by a network drive. To check what drive letters are used, open "My Computer" and note the drive letters used under "Network Drives."

**Reformat morespace:** Right click on the **morespace** icon and pick initialize disk/drive. Then right click on the white box that says unallocated and select new partition. Follow the wizard. When it is done with the partition and format it will read healthy and be ready for use.

If it reads unallocated, you need to create a partition and format. Then right click on the white box that says unallocated and select new partition. Follow the wizard. When it is done with the partition and format it will read healthy and be ready for use.

**Important:** Select Quick Format for a timely format.